



QUICK START GUIDE

WELCOME TO CARVEWRIGHT. LET'S GET YOU CARVING!



ATTENTION: Operation of this tool should not be attempted until all instructions, safety rules, etc. contained in the Owner's Manual have been read thoroughly and understood completely. Failure to do so can result in accidents involving fire, electric shock or serious personal injury. **DOWNLOAD** and **SAVE** the Operator's Manual and review it frequently for continuing safe operation and for instructing others who may use this tool.



INSPECT YOUR MACHINE IMMEDIATELY UPON RECEIPT FOR SHIPPING DAMAGE

If you suspect shipping damage contact CarveWright immediately at: 713-473-6572 Each New CarveWright Machine has been tested by one of our Factory Trained Technicians. We make every attempt to completely clean the machine; however, you may notice a small amount of sawdust.



DO NOT RETURN THIS UNIT TO THE RETAILER WHERE IT WAS PURCHASED

IF YOU ENCOUNTER A PROBLEM WITH THE MACHINE, CONTACT CARVEWRIGHT SUPPORT FOR PROPER ASSISTANCE. If by chance you should have to return your machine, you will need your original box and packing material.

FOR MORE IN-DEPTH INFORMATION ON SETTING UP AND USING YOUR CARVEWRIGHT



Download the full CarveWright User Manual online.
<http://support.carverwright.com/carverwright-manuals-and-guides/>



Download the Learning Guide for full instruction of your CarveWright System.
http://support.carverwright.com/learning_guide/

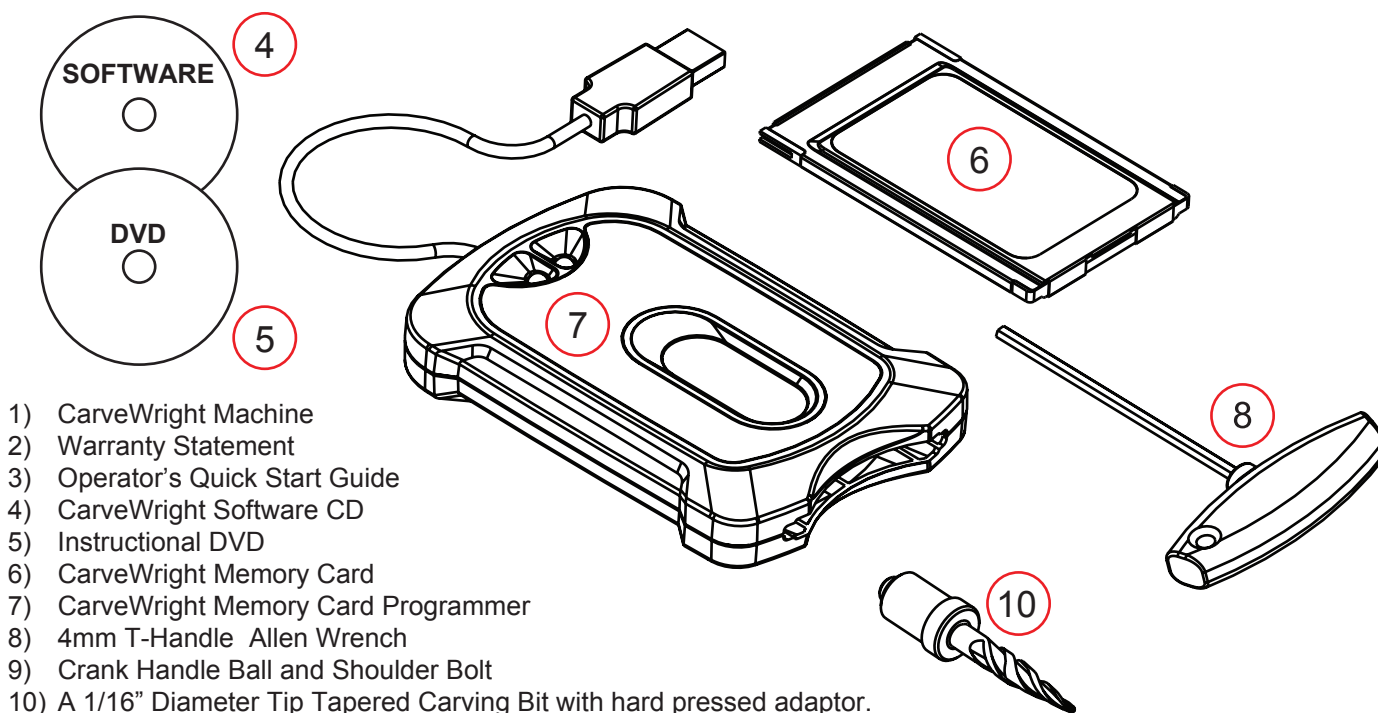


Visit our Support page for more advanced information on the CarveWright System
<http://support.carverwright.com>

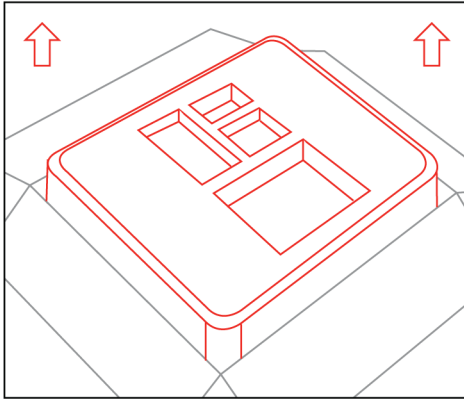


For all support questions, please use the following contact information:
713-473-6572
support@carverwright.com

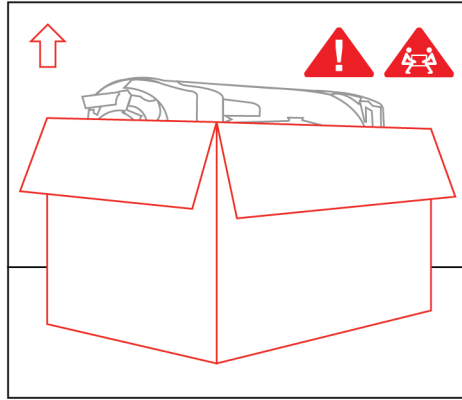
ITEMS INCLUDED WITH THE CARVEWRIGHT SYSTEM



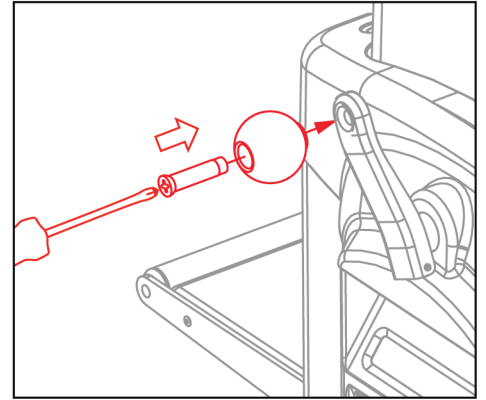
1. REMOVE THE TOP PACKAGING FOAM



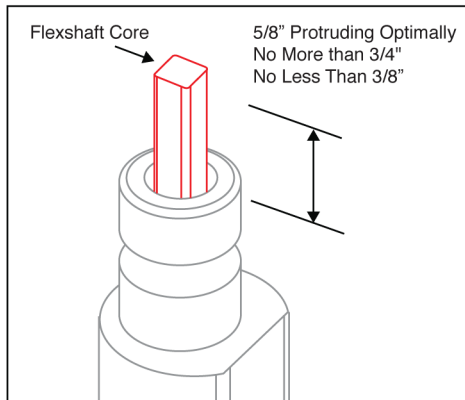
2. REMOVE THE MACHINE FROM BOX AND STORE PACKAGING



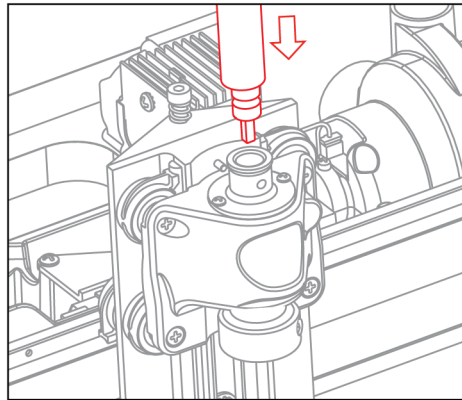
3. ATTACH THE HANDLE



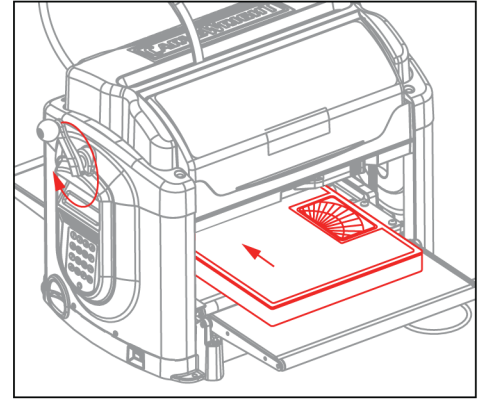
4. PREPARE THE FLEXSHAFT ASSEMBLY



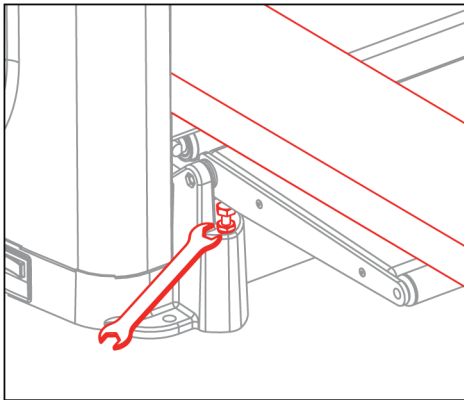
5. INSERT THE FLEXSHAFT INTO Z-TRUCK



6. CHECK THE MACHINE HEAD PRESSURE.



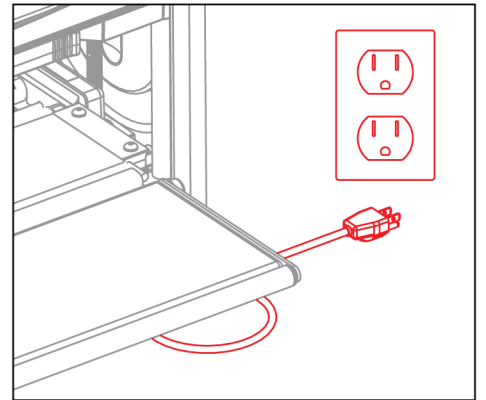
7. CHECK OUTFEED TABLES



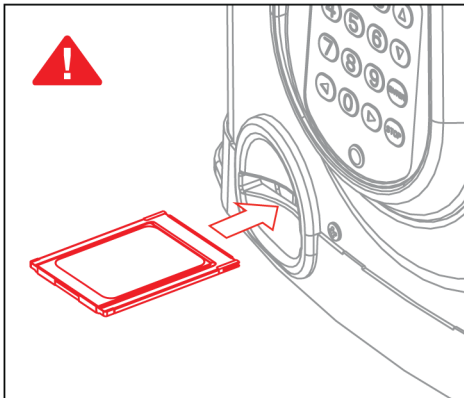
8. INSTALL SOFTWARE AND FOLLOW THE REGISTER INSTRUCTIONS



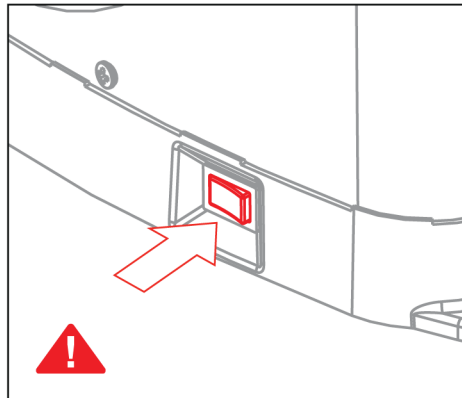
9. PLUG THE POWER CORD INTO A WALL OUTLET



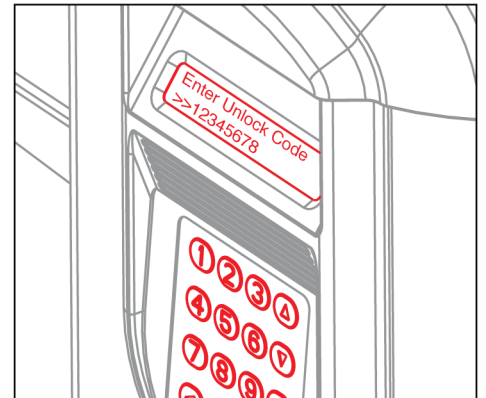
10. INSERT MEMORY CARD



11. TURN POWER ON



12. ENTER UNLOCK CODE



UNPACKING AND SETTING UP THE CARVEWRIGHT SYSTEM

1. REMOVE THE TOP PACKAGING FOAM

After opening the shipping box, carefully remove the accessory items and the top molded foam packing from the machine.



2. REMOVE THE MACHINE FROM BOX



With a helper, lift out the machine and place it on a sturdy table or bench. Fold down the Outfeed Support Tables. Remove the plastic film covering the top clear safety cover. Please keep the box, protective cardboard corners, and packing foam for secure transportation to the service center in the event that the machine needs service. **WARNING:** Machines being shipped back for service not packed in the original packaging are often damaged in shipping. Customers are responsible for this damage, which can cost as much as the total price of the machine in some cases.

3. ATTACH THE HANDLE

Attach the crank handle ball to the crank lever using the supplied shoulder bolt.

4. PREPARE THE FLEXSHAFT ASSEMBLY

After removing the plastic wrapping from the end of the flexshaft assembly, gently pull the protruding flexshaft core (with squared end) out of the sheath several inches. Holding the end vertically, push the core back into the sheath and make sure that it slips into, and engages, the cutting motor. It will drop into the receptacle on the motor side about 5/8ths of an inch. Turn the core by hand and feel for resistance of the motor. If the shaft spins without resistance, push the core inward while rotating until it drops into the slot and engages the motor.

5. INSERT THE FLEXSHAFT INTO Z-TRUCK

Looking through the slot in the top cover, locate the shaft receptacle in the top of the cutting head. The end of the flexshaft assembly is held in place with a ball detent. Inside the receptacle there is a square recess that mates with the exposed square end of the flexshaft core. Turn the chuck on the bottom of the cutting head (open the safety cover for access) until the square core end can be inserted into the recess. Press the flex shaft all the way down into its receptacle. A click will be heard and felt as the shaft snaps into place. Turn the chuck to feel that the spindle is moving smoothly and you can feel the resistance of the motor.

6. CHECK THE MACHINE HEAD PRESSURE.

It is very important that the head pressure be checked prior to operating the machine. Like other machine tools, the machine structure must be checked and adjusted during initial set-up. Many times the rigors of shipping will cause the machine structure to become slightly misaligned which in turn causes decreased head pressure. The machine will not operate correctly with low head pressure. Please refer to the Troubleshooting section of the CarveWright Manual to view the directions for checking the head pressure and the Care and Maintenance section to view the instructions for adjusting the machine if the head pressure is too low at set-up. You may also search "head pressure" on our searchable support pages at <http://support.carverwright.com>.

7. CHECK OUTFEED TABLES

Make sure that the outfeed tables are adjusted correctly. Fold the outfeed trays down and check that they are adjusted to the correct height. To check, place a flat piece of material across the two belt drive trays and verify that the rollers on the outfeed trays are just below the material. Adjust if necessary.

8. INSTALL SOFTWARE AND FOLLOW THE REGISTRATION INSTRUCTIONS

Use the supplied install disc only if you have recently purchased your CarveWright System. Otherwise go to <http://www.carverwright.com/updates> to download the most current version of the software. **IMPORTANT:** Follow the Installation and registration instructions found either on the disc or the download page.



10. INSERT MEMORY CARD

BEFORE THE MACHINE CAN BE USED, THE MEMORY CARD NEEDS TO BE PROPERLY INSERTED. THE LCD SCREEN WILL BE BLANK IF THE CARD IS NOT INSERTED. **Note:** In order to carve a pattern you must first use the CarveWright Project Designer software to generate one and upload it to the memory card.



11. TURN POWER ON

NEVER TURN THE POWER ON WITHOUT THE MEMORY CARD INSTALLED. LIKEWISE, ALWAYS TURN THE POWER OFF BEFORE REMOVING THE MEMORY CARD. FAILURE TO FOLLOW THIS PROCEEDURE CAN RESULT IN DAMAGE TO THE MEMORY CARD AND/OR MACHINE.

12. ENTER UNLOCK CODE

At the conclusion of the online machine registration, the user will be presented with an unlock code. The unlock code is eight numbers long and will be shown on the "Thank You" page at the end of the software registration process. When the machine is turned on the first time, press any key to advance to the Unlock Code screen. Enter the Unlock Code you obtained above and press the "ENTER" button. The display will advance, if the code is correct, and will remain unchanged for an incorrect code.

13. LEARN AND ENJOY YOUR CARVEWRIGHT

It is very important to spend some time learning how to use your CarveWright Machine and Software before proceeding. The better you understand how the system works the more enjoyable your experience will be. View the provided Instructional DVD and go to our Learning Guide to learn how the software and machine work together. http://support.carverwright.com/learning_guide